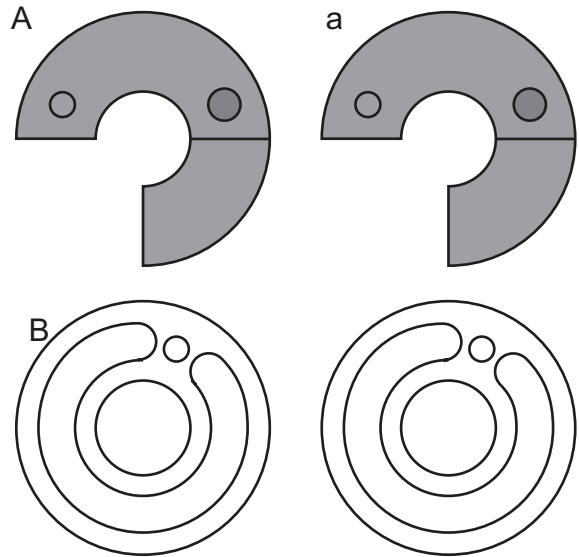
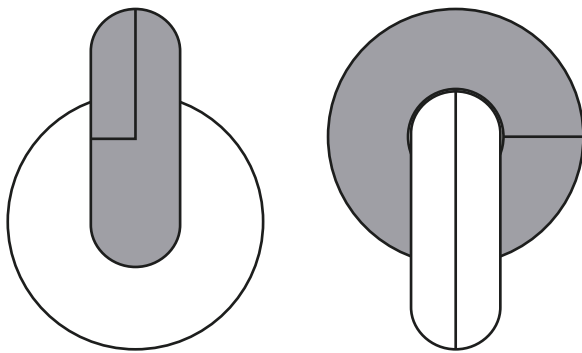


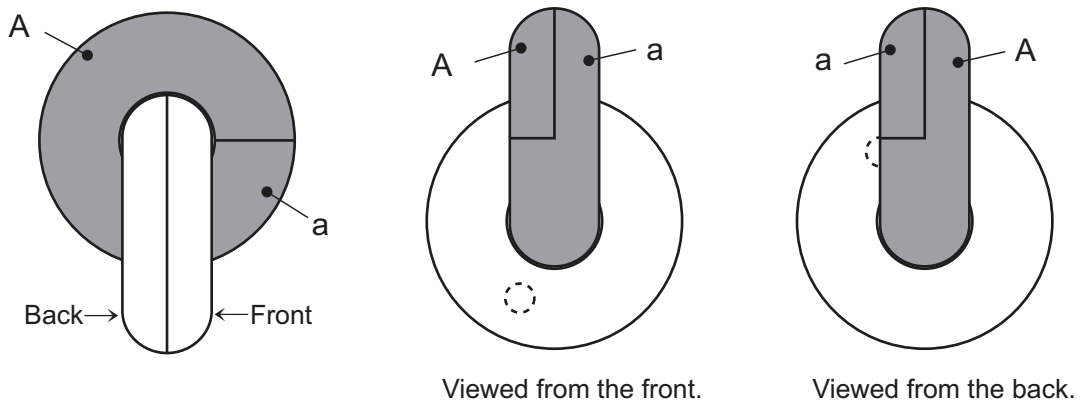
Black : A

Silver : B

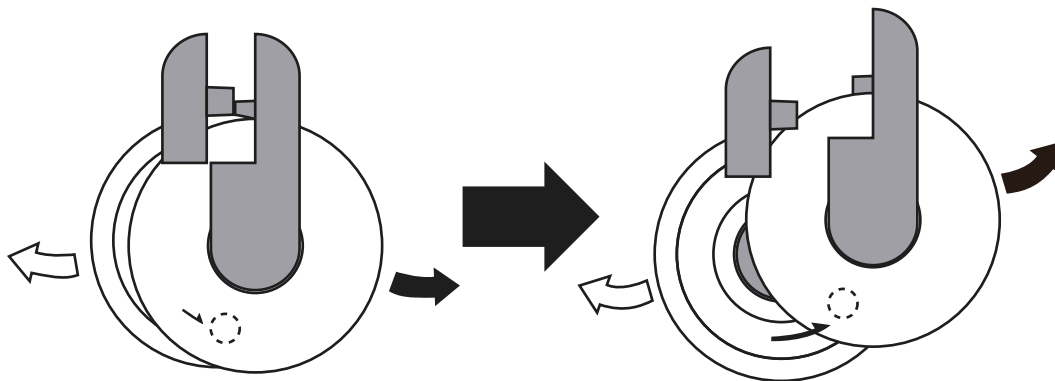
The donuts are made from these identical shapes. "Donuts" is written on the donuts marked "a."



1 Match up the inner pieces (marked with a circle) on "B" with the separation line. At this moment, the inner pieces on "B" is located at an angle of 180 degrees to each other.



2 Slide in the direction of the arrows to unlock the donuts.



*Do not pull directly sideways. Match up the inner pieces while sliding the donuts to unlock the puzzle.

(To our customers)
We provide this explanatory diagram as a key to the puzzle.
Due to the nature of the products, we cannot provide any
explanations over the telephone. Thank you for your understanding.

