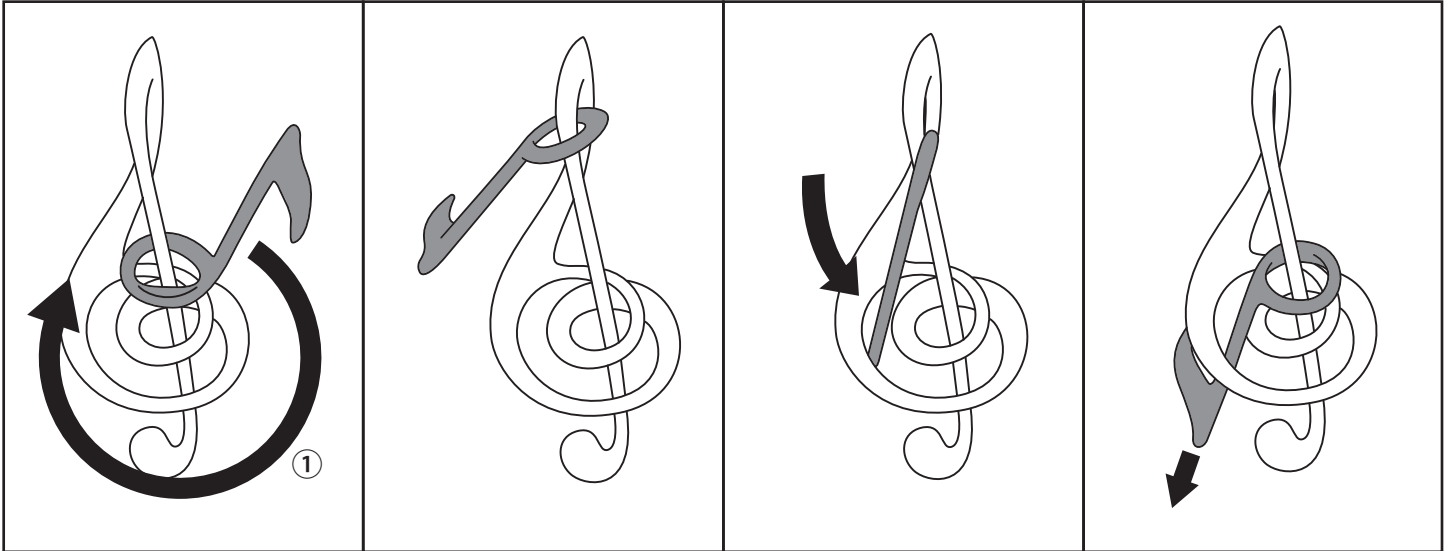


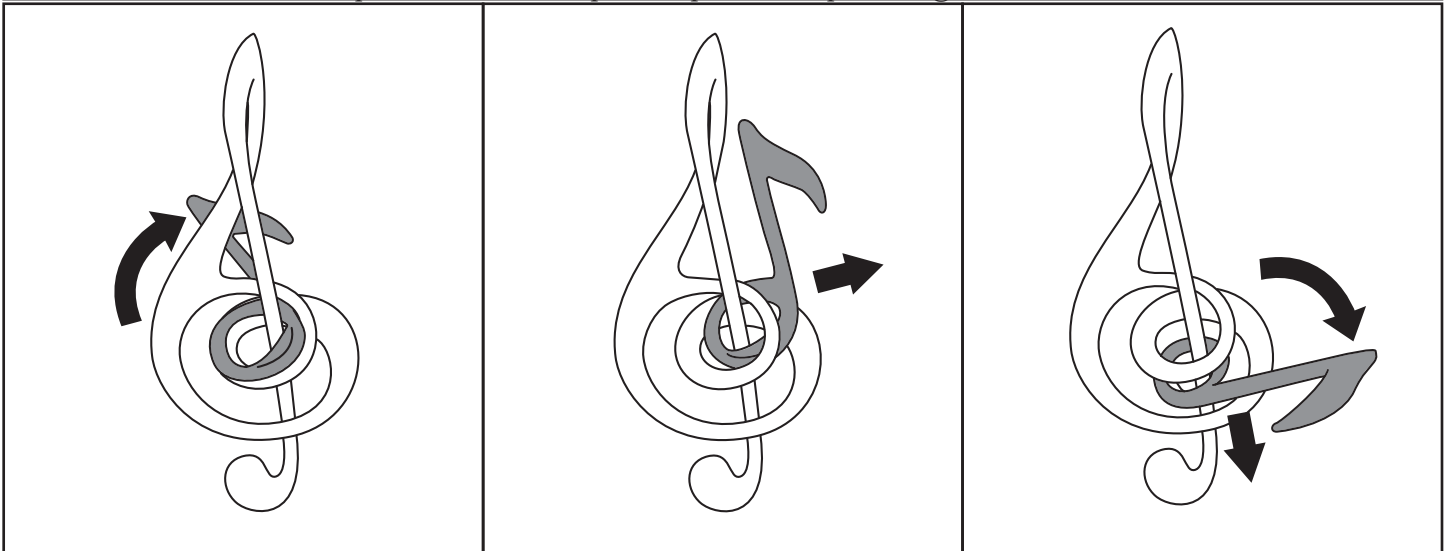
Cast Harmony



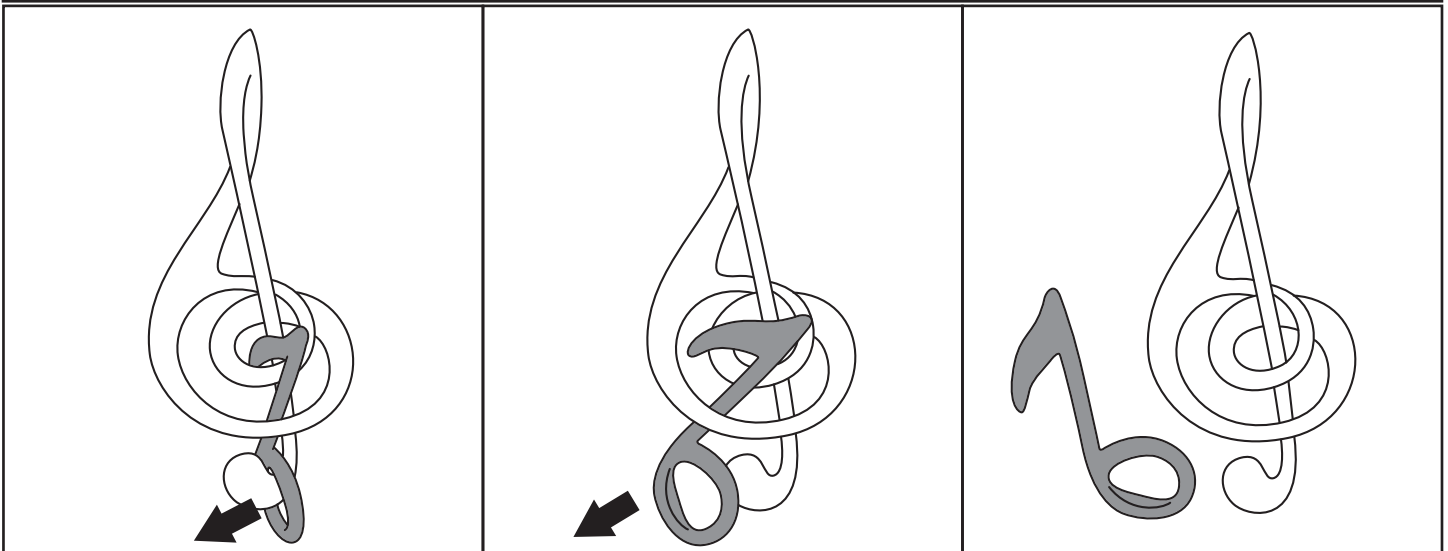
Objective of the Puzzle: Take off the and put back on the note
 Difficulty Level: 6 (on a scale 5-10)
 Manufacturer: Hanayama



Rotate the note in the direction of Arrow 1.
 Turn the note upside down and put its pointed tip through the G clef.



Rotate the note going under the spiral of the G clef and slide it downwards.



Remove the ring part of the note from the G clef as shown.

There, you've unraveled it!